



MID FLORIDA
LOGISTICS PARK



For Lease

Mid Florida Logistics Park

Development overview

Mid Florida Logistics Park is a Class A industrial park located in the city of Apopka with immediate access to the Western Beltway (State Road 429) and US Highway 441 (Orange Blossom Trail). Apopka has a number of amenities surrounding Mid Florida Logistics Park, which includes rail access - one of the only locations in Orlando with active rail to the site.

General Electric Dr, Apopka, FL

Matt Sullivan, SIOR, CCIM

Managing Director
matt.sullivan@am.jll.com
+1 407 930 1802

Wilson McDowell, SIOR, CCIM

Managing Director
wilson.mcdowell@am.jll.com
+1 407 930 1801

Bobby Isola, SIOR, CCIM

Senior Vice President
bobby.isola@am.jll.com
+1 407 930 1804

Jones Lang LaSalle Brokerage, Inc.



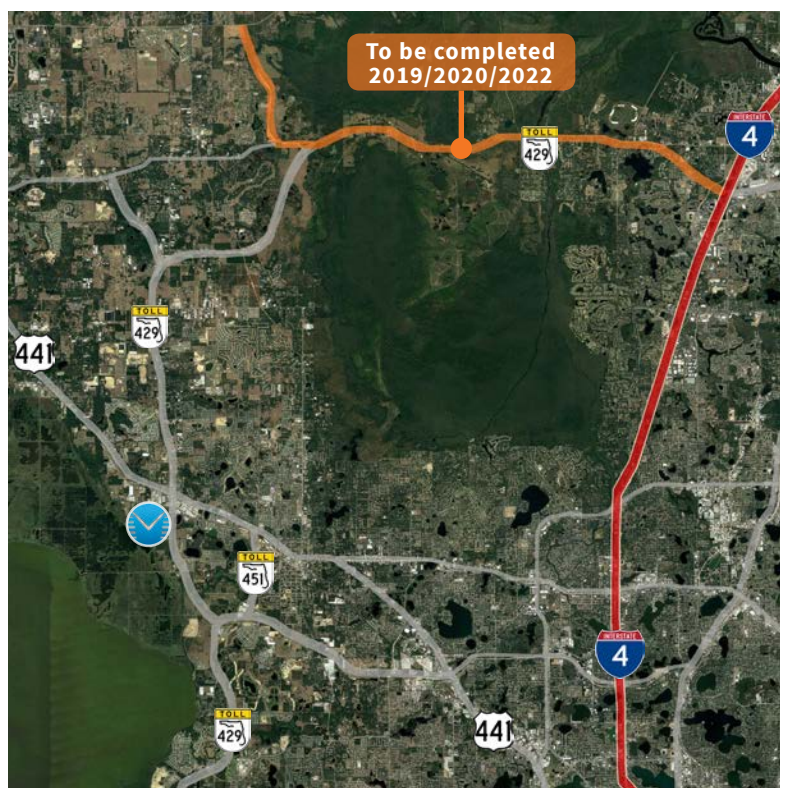
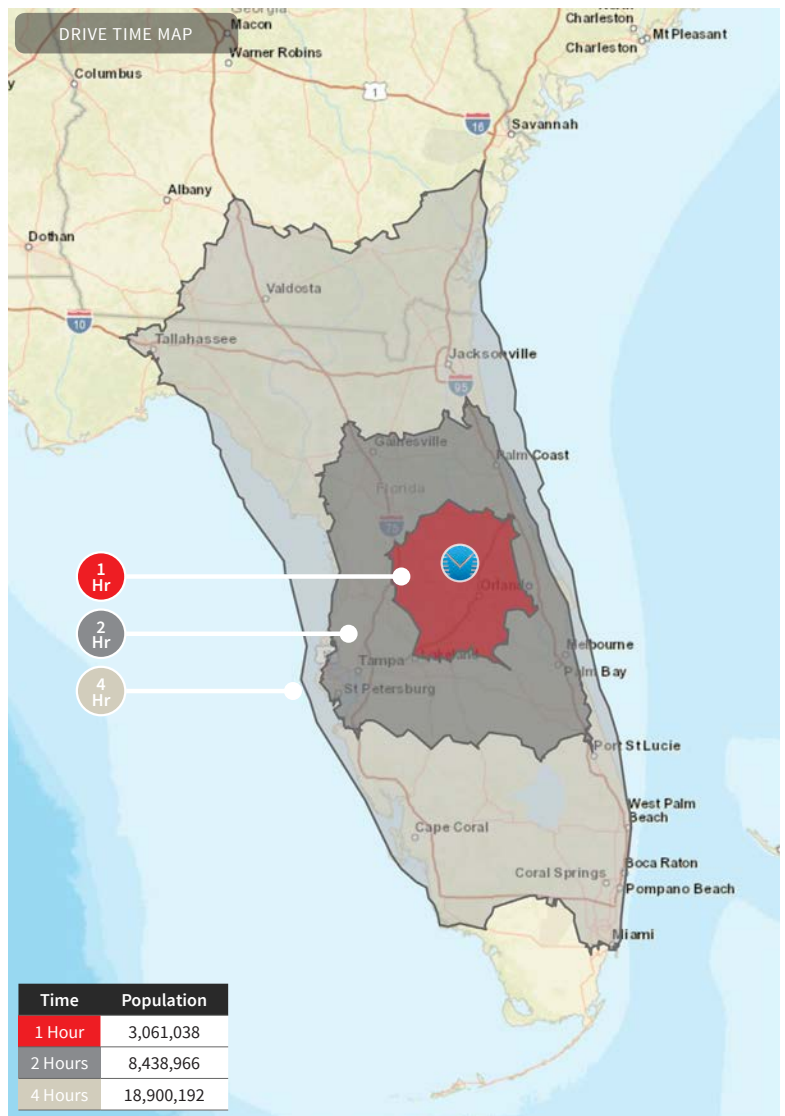
Property specifications

- Building sizes range from 255,000 to 655,200 s.f.
- Development total of over 2,300,000 s.f.
- Build-to-suit office
- Clear height of 30'+
- Dock high and grade level access
- Cross dock and rear load
- Tilt wall construction
- Rail served
- 143.51 acres
- 2,425' of frontage on the Western Beltway (SR 429)
- Zoned I-1, Restricted Industrial, City of Apopka

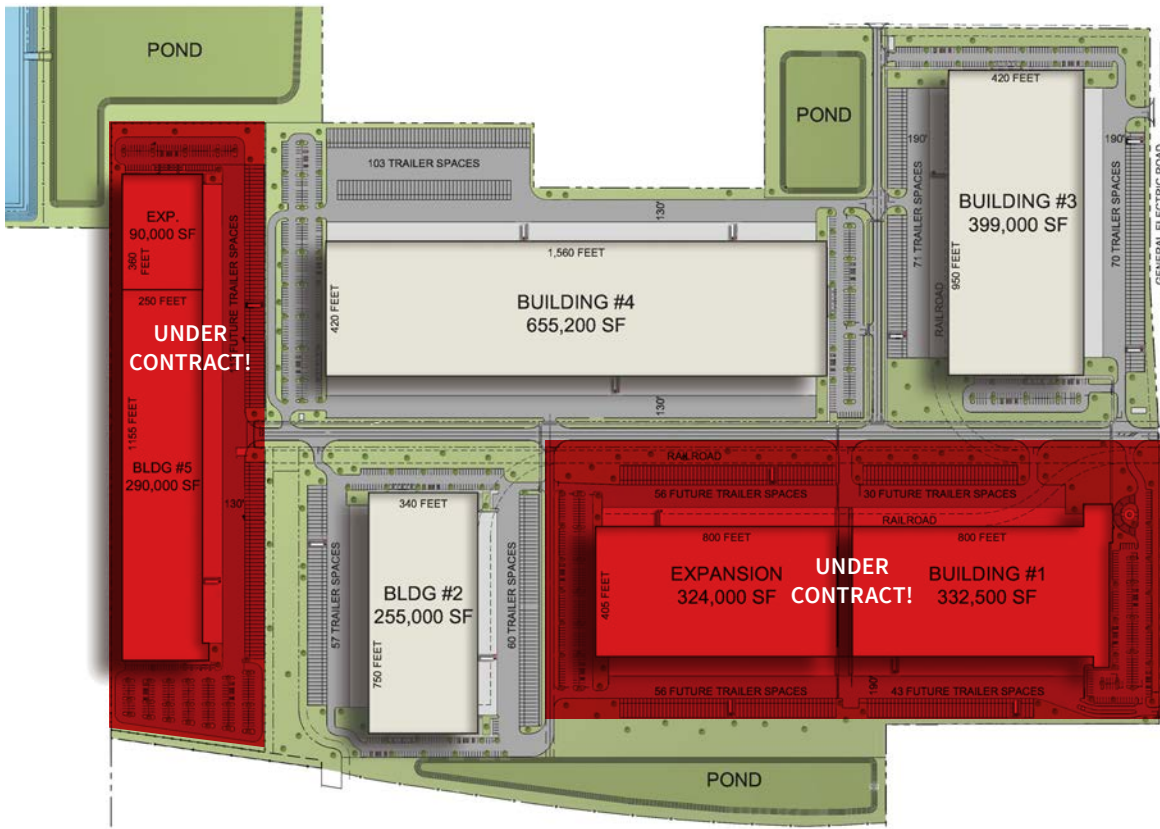
Why Mid Florida Logistics Park?

Mid Florida Logistics Park offers users immediate access to highways, an abundant amount of amenities, an excellent labor force, and higher quality of life for employees. Located in Northwest Orange County, one of the fastest growing, highly desirable submarkets in Orlando, Mid Florida Logistics Park offers users many amenities that other sites cannot offer. Other benefits include:

- Immediate Access to Highways
- Proximity to Labor
- Proximity to Customers
- Proximity to Executive Housing
- Frontage on 429
- Local Amenities
- Flexible Deal Structure



Conceptual Site Plan



Building 1

- 656,600 s.f.
- BTS office
- 405' building depth
- 190' truck courts
- 185 trailer spaces
- **UNDER CONTRACT!**

Building 2

- 255,00 s.f.
- BTS office
- 340' building depth
- 130'-190' truck courts
- 117 trailer spaces

Building 3

- 399,000 s.f.
- BTS office
- 420' building depth
- 190' truck courts
- 141 trailer spaces

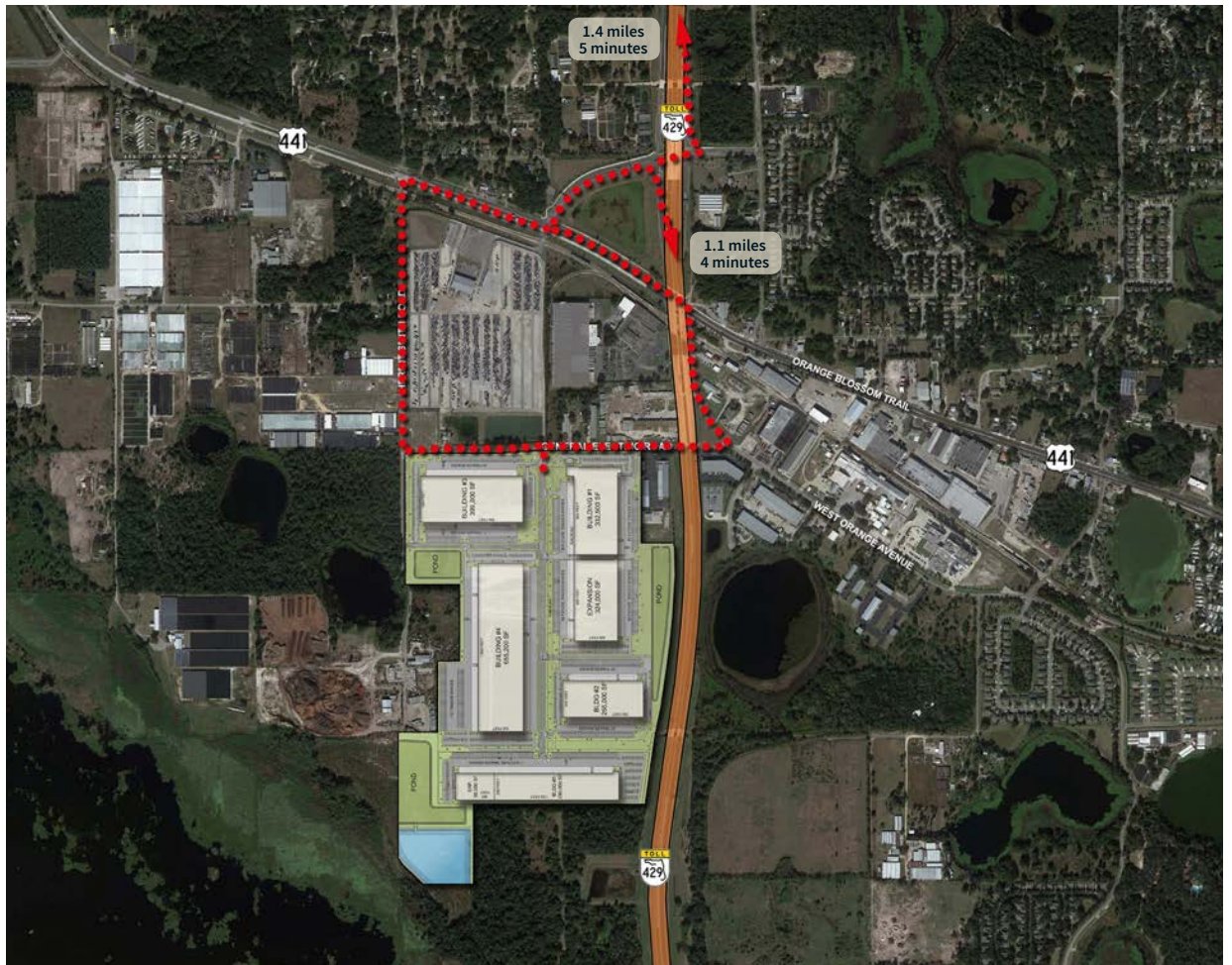
Building 4

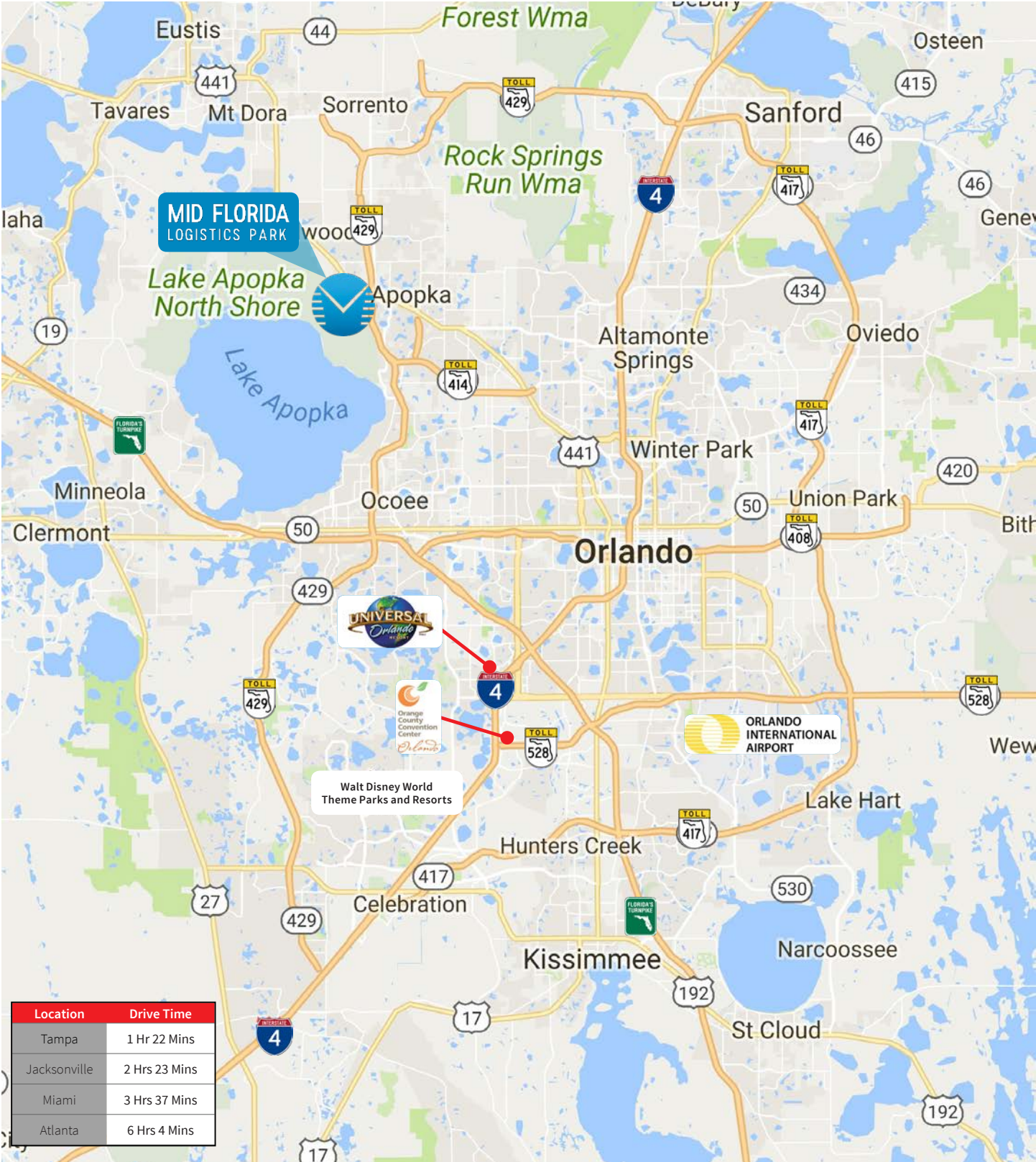
- 655,200 s.f.
- BTS office
- 420' building depth
- 130' truck courts
- 103 trailer spaces

Building 5

- 380,000 s.f.
- BTS office
- 250' building depth
- 130' truck court
- 113 trailer spaces
- **UNDER CONTRACT!**

Access to 429





DISCLAIMER
 Jones Lang LaSalle Brokerage, Inc., a licensed real estate broker. Although information has been obtained from sources deemed reliable, neither Owner nor JLL makes any guarantees, warranties or representations, express or implied, as to the completeness or accuracy as to the information contained herein. Any projections, opinions, assumptions or estimates used are for example only. There may be differences between projected and actual results, and those differences may be material. The Property may be withdrawn without notice. Neither Owner nor JLL accepts any liability for any loss or damage suffered by any party resulting from reliance on this information. If the recipient of this information has signed a confidentiality agreement regarding this matter, this information is subject to the terms of that agreement. ©2019. Jones Lang LaSalle IP, Inc. All rights reserved.

